

HID-High Power ballasts for HPL and HPI lamps

BHL 1000L 202

The HID High-Power ballast is an impregnated (HID standard) electromagnetic copper/iron ballast for use with an external ignitor for HID lamps.

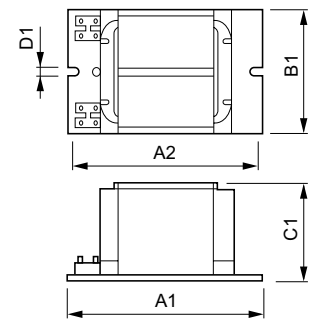
Product data

General Information	
Application Code	L202
Operating and Electrical	
Input Voltage	230 V
Input Frequency	50 Hz
Power Factor 100% Load (Min)	0.85
Mains Voltage Performance (AC)	-8%~+6%
Mains Voltage Safety (AC)	-10%~+10%
Input Current with PF Correction	5.3 A
Input Current without PF Correction	7.5 A
Power Factor without PF Compensation (Nom)	60
Power Losses (Nom)	39 W
Wiring	
Connector Type	Screw
System characteristics	
Rated Ballast-Lamp Power	1000 W

Temperature	
T-Winding (Max)	130 °C
Delta-T Normal Conditions	75 °C
Approval and Application	
Approval Marks	CE marking CCC certificate
Product Data	
Full product code	694818229967300
Order product name	BHL 1000L 202
EAN/UPC - Product	6948182295354
Order code	913710104942
Numerator - Quantity Per Pack	1
Numerator - Packs per outer box	1
Material Nr. (12NC)	913710104942
Net Weight (Piece)	6.900 kg

HID-High Power ballasts for HPL and HPI lamps

Dimensional drawing



BHL 1000 L202

Product	D1	C1	A1	A2
BHL 1000L 202	7 mm	102.0 mm	165 mm	123 mm

